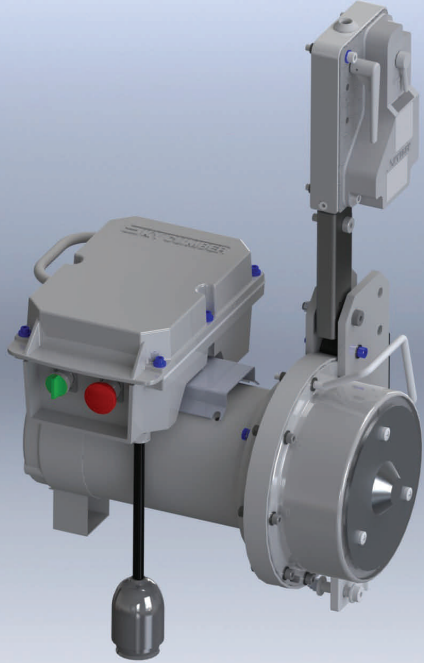


## COMPACT HOIST

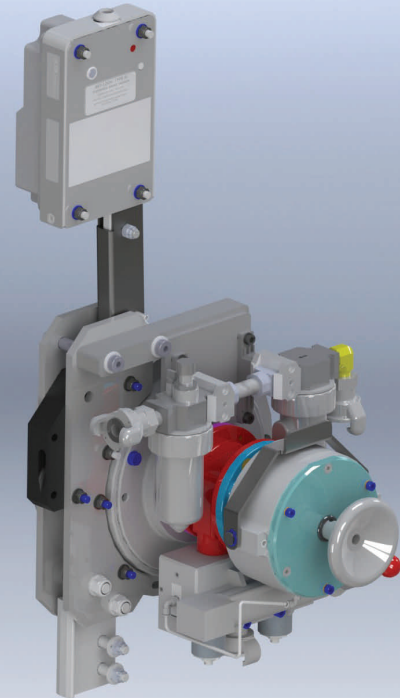


### Compact Electric 1000, 1250 & 1500

- 220V Single Phase, 3 Phase
- 110V Available (KCE-1000 only)
- 7.5 amp (KCE-1500 9.24 amp)
- 50hz or 60hz
- 35 FMP
- 108 lbs (KCE-1500—120 lbs)
- Includes SkyLock III
- Pendant Ready

### Compact Air 1000 and 1250

- 100 PSI 70 CFM
- 35 FPM
- 90 lbs
- Gast Air Motor
- Includes Filter and Lubricator
- Includes SkyLock III
- Pendant Ready



- 24 Months Factory Warranty on ALL Parts and Labor
  - 36 Months on Geartrain Parts and Labor
  - All Models operate on 5/16 Wire Rope
- Gear Box interchangeable with Air or Electric Motors
- Use of Planetary Gear System—the most efficient gearbox in the industry
  - Industry's best electric power pack, draws the fewest amps
- 20 Years Proven Technology from the Industry Leader—Sky Climber

1800 PITTSBURGH DRIVE, DELAWARE, OHIO 43015  
TOLL FREE: 800-255-4629, DIRECT TEL: 740-203-3900, FAX: 740-203-3901  
EMAIL: [info@skyclimber.com](mailto:info@skyclimber.com)

K. M. O. ZONE ITTERBEEK, NIJVERHEIDSSTRAAT 23, 2570 DUFFEL BELGIUM  
TEL: 32- (0) 3 887 81 20, FAX: 32 (0) 3 887 09 94  
EMAIL: [info@skyclimber.com](mailto:info@skyclimber.com)